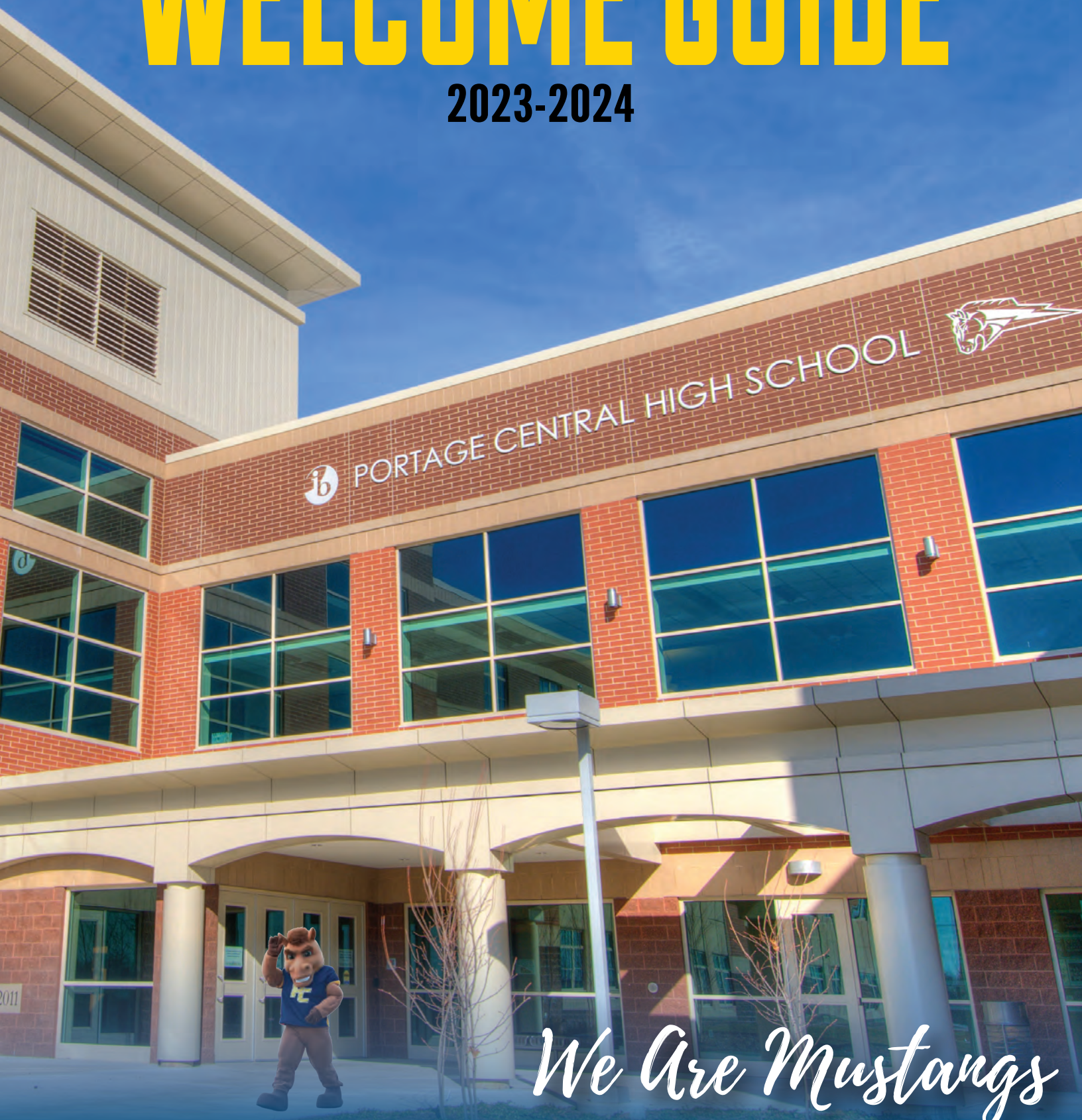




PORTAGE CENTRAL HIGH SCHOOL

WELCOME GUIDE

2023-2024



We Are Mustangs

Here to Help

Some people you can contact



Aja Kaylor

Assistant Principal (A-K)
(269) 323-5257
akaylor1@portageps.org



Tama Salisbury

Assistant Principal (L-Z)
(269) 323-5258
tsalisbury@portageps.org



Joe Wallace

Athletic Director
(269) 323-5361
jwallace@portageps.org



Nikki Smith

Activities Director
(269) 323-5265
nsmith@portageps.org



Jason Frink

IB Coordinator
(269) 323-5350
jfrink@portageps.org



Henry Kite

Student Resource Officer
(269) 323-5340
hkite@portageps.org

Important Numbers

Main Office	(269) 323-5200
Attendance	(269) 323-5259
Counseling	(269) 323-5283
Welcome Center	(269) 323-5261
Special Education	(269) 323-5324
Transportation	(269) 323-5151

Welcome & Thank You

THANK YOU FOR COMING TO PORTAGE CENTRAL HIGH SCHOOL

This is a special place. And that special quality has happened because students have had an enormous role in developing this school for over 100 years.



When we started as an agricultural school, PC's work ethic was forged. Sons and daughters of mostly Dutch farmers began to define what it meant to work intensely hard to be successful in their new high school. In the late 1940s, students helped build a new high school to prepare for a world that was looking for leadership after World War II. They chose a mascot - the Mustang - that spoke to their values: intelligence, strength, and devotion to one another. These students created a culture that made Portage Central High School among the best schools in the state and in the nation. And, these students set the scene for our future: the next Portage Central High School, dedicated in 2011 to you and to all future Mustangs.

Here you and I are. Thousands of diverse students, educators, parents and community members have built this incredible place to give you the best education possible. They are not asking for your thanks. They are asking first that you work hard and do well so that you can graduate and build your own successful future. They are asking you to do what they did: leave PC better - more thoughtful, more supportive, more accepting, more rigorous - than when you arrived. When we do that, we will ensure that students, long after you and I are gone, will keep Portage Central High School growing stronger.

Thank you in advance for your commitment to your future and to all of our futures.

In respect and appreciation,

ERIC ALBURTUS

Eric Alburtus

Principal for Portage Central High School
(269) 323-5255
ealburtus@portageps.org

This is Portage Central

Where we began

In 1922, Portage Central got its beginnings as a school with the formation of Portage Agricultural High School. At that time, the school was located in the current Portage Public Schools Administration building. It was here in 1926 that "Blue and Gold" first appeared in connection with the school after its basketball team chose the colors for their - homemade - jerseys. Later in the 1930s, we received the next crucial link in our history when we officially became the Mustangs.

After years of rapid expansion in the student body (for a few years upperclassmen had to be shipped to other schools with more space), we built the new Portage Township High School. This building served us proudly for 62 years as the home of the Mustangs.

Finding our own

In 1965, after the completion of a second Portage Public Schools high school, we became the Portage Central Mustangs. Portage Central went on to become a leader in the area, state, and nation in academics, athletics, and extra-curricular activities, collecting numerous state and national titles.

In November of 2007, the community of Portage approved \$119 million in bonds to build a new Portage Central High School along with other improvements. After years of work, in August of 2011, the official Grand Opening Ceremony was held for the new Portage Central High School building.

Tradition in Transition

Over the past five years, we have accomplished a series of community events such as Last Night Under the Lights in 2017, celebration for a new natatorium in 2018 a new McCamley Field in 2019. August of 2020 marked the opening of the new Central Middle School and Centennial Park. 2022-23 marked the start of our second 100 years as Portage Central High School turned 100. August 2023 will see the opening of the newly named McCamley-Knight Field.

"Portage Central went on to become a leader in the area, state, and nation in academics, athletics, and extra-curricular activities, collecting numerous state and national titles."



Mustang Pride

3%

In Rare Company

Portage Central is among only 3% of public schools in Michigan to offer the International Baccalaureate college-prep program.

23

State Championships

Since 1932, varsity teams at Portage Central have captured an impressive 23 state titles in athletics, theatre, and forensics, and this extraordinary legacy of state champions continues to grow.

60%

IB Students

More than 60% of juniors and seniors take one or more International Baccalaureate courses.

70%

Faculty with M.A.

More than 70% of Portage Central faculty hold graduate degrees.

97%

College Bound

More than 97% of Portage Central seniors go on to attend college after graduation.

97%

Graduation Rate

More than 97% of students graduate from Portage Central, preparing them for future success.

WE ARE CONNECTED

What every Freshman should know

By your Portage Central Link Crew

- Get involved! (Spirit, clubs, organizations, activities, sports)
- Get out of your comfort zone and try new things!
- Ask for help!
- Have healthy relationships with teachers and friends
- Keep balance and boundaries in your life
- Make new friends
- Put in the effort and classes will be doable
- Hold yourself accountable
- Use time management and organizational skills
- Walk with purpose on the right side and through the right-side doors

Freshman Checklist

Do you have what it takes to be a Mustang?

- Connect with your Link Crew leader
- Join a club
- Learn the school fight song and participate at sporting events
- Volunteer! Volunteering is a very rewarding experience, and it can open up more opportunities when you become an upperclassman
- Write a letter to yourself and read it in 4 years
- Try out for something (a sport, theatre, band) that you never would have considered before

What does it mean to be a Mustang? The ideas for these words were provided by students and teachers alike at Portage Central High School

We Work

- Try your best
- Participate
- Get involved
- Work as a team
- Communicate
- Do assignments
- Turn work in on time
- Pay attention
- Follow directions
- Put in your time

We Learn

- Pay attention
- Learn from mistakes
- Engage
- Improve
- Try something new
- Be present
- Listen actively
- Wonder
- Take constructive criticism
- Be resilient

We Lead

- By example
- Take initiative
- Do what's right
- Help others through service and kindness
- Answer questions
- Listen
- Make good choices
- Don't be a bystander
- Think for yourself
- Empower others

We Teach

- Set a good example
- Help peers/others
- Teach someone a new skill
- Give advice
- Tutor
- Instruct/Coach
- Be a role-model
- Show Kindness
- Engage Students
- Understand

WE WORK, LEARN, LEAD, TEACH, CARE, COMMIT, EXCEL WE ARE DIVERSE WE ARE ONE COMMUNITY WE ARE MUSTANGS

We Care

- Do your work
- Respect yourself and others
- Look out for other people
- Pick up after yourself
- Listen
- Say nice things
- Help your teammates
- Encourage others
- Be kind
- Put in the effort

We Commit

- Show up to school
- Participate
- Stick with plans
- Be responsible
- Don't quit
- Have grit
- Endure
- Be a Team Player
- Be a friend
- 100% Effort

We Excel

- Pay attention
- Be responsible
- Cheer people on
- Include everyone
- Compliment someone
- Show up
- Participate
- Don't distract
- Be kind
- Be respectful

We have school
SPIRIT



FIGHT SONG

Onward Portage, Ever Onward!
Fight to Victory!
Blue and Gold Forever Flying
Here's our Cheer to Thee!

Fighting Mustangs, Loyal Boosters
Here's to Do or Die
All for the fame of our School
PORTAGE HIGH!

Rah Rah, SIS BOOM BAH
Portage Central, RAH RAH RAH

TRADITIONS

- Stop by Vinnie's to find rubber ducks and grab coffee too
- Popcorn Wednesday: Popcorn is available at the Welcome Center for 50 cents
- Rallies to Assemblies
- Kissing the Paddle
- Music Fridays
- Christmas concert with a crazy conductor
- Announcements at the beginning of 4th hour
- Preview Assemblies for Theatre and Forensics



Friendly Reminders From Your Assistant Principals

Attendance Procedures

Parents and guardians can excuse absences by contacting the attendance office at 269-323-5259. Beyond losing out on the academic benefit of attending class, excused and unexcused absences can impact your lunch pass eligibility, and unexcused absences result in detention.

Students who need to leave school prior to the end of the school day must process an early dismissal at the Attendance Office before leaving the building.

Phones

Pay close attention to each teacher's classroom policy; some permit phones at appropriate times and others prohibit phones in the classroom.

Backpacks / Lockers

You'll have access to your own locker, which is where to store backpacks and bags if you bring them. Backpacks, purses, and any bag with a shoulder strap must stay in lockers during the school day and may not be stored in instructional spaces.

Dress Code

Be yourself, respect others, and use common sense. Some clothing and accessories are school and weather appropriate and some are not. Wondering about hats? Yes, they are permitted. Have other questions about our dress code? See the school policy page on the GLIC or reach out to your AP for more details.

Off-Campus Lunch

All eligible students will have the opportunity to leave the building for lunch if they have family permission and have purchased a two-dollar monthly lunch pass. Lunch passes are a privilege tied to good attendance. Eligibility for the current month is based upon the last month's attendance. When you're out and about for lunch, please remember school policies apply—be kind and courteous to our local businesses and please pick up after yourselves. Want more info about lunch pass eligibility? Visit the GLIC!

TYPES OF ABSENCES

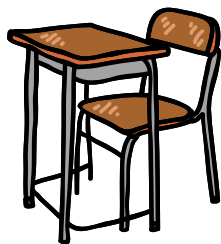
EXCUSED
Excused by a parent for reasons that do not fit in the categories below, like vacation days, college visits, or short-term illnesses. More than three excused absences in any one class in a month will impact lunch pass eligibility.

MEDICALLY-WAIVED
Verified by a medical office note.

ADMINISTRATIVE
Excused by the office for a school-sponsored activity.

NON-TOTALING
Religious observances, court appearances, etc.

UNEXCUSED
Any unverified absence. Results in the assignment of after school detention. More than one unexcused absence in a month will impact lunch pass eligibility.





Aja Kaylor
Assistant Principal (A-K)
(269) 323-5257
akaylor1@portageps.org



Tama Salisbury
Assistant Principal (L-Z)
(269) 323-5258
tsalisbury@portageps.org

Medications

With the safety of all of our students as our top concern, we request that whenever possible students not bring medications (prescription, non-prescription/over the counter, herbal remedy, vitamin, or nutritional supplement) to school or school-related events. We understand that this may not always be possible. Students with a need to have medication at school may carry it with them as long as their family completes an authorization form, which is available in the Main Office.

Mustang Athletics

Welcome

Joe Wallace, Athletic Director

Portage Central has a rich athletic tradition, which was started years ago by a community that wanted to give students the best extracurricular experience possible. Our community has answered the call time and time again with bond-referendum votes that have given us some of the best facilities in the state of Michigan. Over the last five years, we have remade much of our athletic campus with two synthetic, all-weather fields in the new McCamley-Knight Field and Mustang Field, and a state of the art natatorium at the high school. Upgrades at our baseball and softball fields, as well as our tennis courts and Stable auxiliary facility, have also taken place. Thank you, Portage voters!

At the forefront of the program is a long list of experienced head coaches, assistants, and volunteers committed to each and every one of our student-athletes. They spend countless hours planning and preparing our teams for competition, and they teach the fundamentals associated with each activity. We have a culture of high expectations and work to provide our student-athletes with a rich and meaningful experience that gives them the life skills to win not only in their sports but at the game of life.

In addition to community support and top-notch coaches, the Mustang athletic program benefits immensely from the time and work put in by parent booster groups. These groups go above and beyond their role to help raise money and to support our programming.



Game Day Attendance Policy

A full day of school is required for student-athletes to participate in athletic competitions unless an absence is preapproved or unavoidable. Make sure to communicate those absences to the Attendance Office and the Athletic Office.

Eligibility Requirements

Portage Central requires every student-athlete to maintain a specific academic and conduct standard in order to participate in athletics. Academic success must come first, and students must meet weekly and semester benchmarks to be involved in athletics. Please see the student handbook for a detailed description of the athletic eligibility requirements.

Final Forms Registration for All Student Athletes - Upload Physicals and E-Sign Code of Conduct Forms

Each student planning on participating in athletics while at Portage Central High School will need to have a parent and student Final Forms account. Register student-athletes at the following website: www.portage-mi.finalforms.com. This service for our athletic department is at no additional cost to our families, and we look forward to utilizing it for increased compliance, ease of form collection, and streamlined communication as we move forward.

Student leaders and athletes, along with their parent/guardian, must attend one Code of Conduct meeting in their high school career, where they will review the Code of Conduct policies and then sign a Code of Conduct form before they can participate.

www.pcmustangsports.com | @PCMustangSports on Instagram, Facebook and Twitter



Athletics Information

Sports Offered & Contact Information

Fall

Sideline Cheer
Cross Country
Football
Golf (G)
Soccer (B)
Swim/Dive (G)
Tennis (B)
Volleyball
Water Polo (B)

Coach

Katie Eichstaedt
Dan Wytko
Mick Enders
Tony Ely
Tim Halloran
Michelle Greene
Nancy Martin
Mikela Higgason
Greg Lowman

Email

keichstaedt@portageps.org
dwytko@portageps.org
menders@portageps.org
tely@portageps.org
thalloran@portageps.org
mgreene@portageps.org
nmartin@portageps.org
mhiggason@portageps.org
glowman@portageps.org

Winter

Alpine Skiing
Basketball (B)
Basketball (G)
Bowling
Competitive Cheer
Hockey
Swim/Dive (B)
Wrestling

Coach

Linda Kozacki
Casey Higgason
Rob Brown
Mark Gunthorpe
Katie Eichstaedt
Drew Moffit
Michelle Greene
Marci Nunez

Email

lkozacki@portageps.org
chiggason@portageps.org
rbrown@portageps.org
mgunthorpe@portageps.org
keichstaedt@portageps.org
moffitdrew@yahoo.com
mgreene@portageps.org
mnunez@portageps.org

Spring

Baseball
Golf (B)
Lacrosse (B)
Lacrosse (G)
Soccer (G)
Softball (G)
Tennis (G)
Track and Field
Water Polo (G)

Coach

Cory DeGroot
Scott Taylor
Morgan Weaver
Kate Twichell
Tim Halloran
Lisa Kiino
Pete Militzer
Dan Wytko
Sam DeVries

Email

cdegroote@portageps.org
staylor@portageps.org
mweaver@portageps.org
ktwichell@portageps.org
thalloran@portageps.org
lkiino@portageps.org
pmilitzer@kzooyca.org
dwytko@portageps.org
sdevries@portageps.org



The Mustang Athletic Club is Here!

The Mustang Athletic Club kicked off in the Fall of 2022 and is the support organization for all of Portage Central Athletics.

The organization's goals are to support and enhance the Portage Central High School athletic programs that help provide our student-athletes with the tools they need to physically **Perform** at their best, with the resources to be **Prepared** for the challenges to come, and to promote **Pride** among the Portage Central students, our athletes, and our amazing community!

Visit the MAC website at www.PCMustangAC.com to find out more as well as learn how to support this organization!



Joe Wallace
Athletic Director
jwallace@portageps.org
(269) 323-5361



Jodi Shearer
Athletic Secretary
jshearer@portageps.org
(269) 323-5361

Final Forms Site for Athletics Registration: www.portage-mi.finalforms.com

Mustang Activities



Welcome

Nikki Smith, Activities Director
nsmith@portageps.org • (269) 323-5265

Portage Central is blessed with outstanding students. These are students who use their talents to make this school the incredible place it is. These are students who lead, debate, perform, play and work together to better PC, this community and our future. These are students, from the student body president to a member of the National Honor Society, who have helped make Portage Central what it is today.

From our Forensic state champions to an internationally recognized Performing Arts program, our students are encouraged - and mentored - to lead and succeed both in the classroom and out. However, not all groups are created to win national competitions or fight world hunger; some are created - by the students - for the purpose of sharing a common interest with the support of a faculty advisor.

We have many organizations for all goals and interests, but if you don't see one for your specific passion, take charge and start your own! This is your opportunity to grab the reins and lead the Mustang Way!

Performing Arts

The Performing Arts programs at Portage Central include Theatre and Forensics. Our theatre program allows students to develop skills in many parts of the theatre including, but not limited to, acting on stage, costume/makeup design, stage management, running crew, and lighting/sound. We view ourselves as an educational program that provides professional-level opportunities for actors, technicians and musicians. Forensics takes place in the spring and provides an excellent chance for students to speak competitively.

Music Programs

PC music programs such as Band, Choir, and Orchestra inspire students to create art through the study and performance of music. Public performances of music help to increase student confidence and self esteem while providing a creative outlet.

Student Activities Policies

Performances and Competitions Attendance Policy

A full day of school is required for students to participate in performances and competitions unless an absence is pre-approved or unavoidable. Make sure to communicate those absences to the Attendance Office and the Activities Office.

Eligibility - Portage Central requires every student leader/performer to maintain specific academic and conduct standards in order to participate in student activities. Academic success must come first, and students must meet weekly and semester benchmarks to be involved with student activities. Please see the student handbook for a detailed description of student activity eligibility requirements.

Code of Conduct - Student leaders and performers, along with their parent/guardian, must attend one Code of Conduct meeting in their high school career, where they will review the Code of Conduct policies and then sign a Code of Conduct form before participating in these Activities: Archery, DECA, Forensics, Link Crew, Marching Band, National Honor Society, and Theatre.

Teresa Imus, Activities Assistant
timus@portageps.org

www.pchsstudentactivities.com



Student Activities & Clubs

Music

Bands	Bryan VanToll
Choirs	Randi Simons-Miller
Orchestra	Silvia McClish

Performing Arts

Forensics (Public Speaking)	Tyler Baas-Peterson
Musical and Play	Ashley Bowen

Student Activities

Link Crew	Nikki Smith
National Honor Society	Kent Baker

School Store & Concessions

Corral (School Store)	Joe Wenzel
Popcorn	Susannah Sims
Vinnie's	Sara Brown
	Julie Griesbach

Co-Curricular

Art Club	Joe King
PCTV (Broadcasting)	Ashley Bowen
Roundup (Yearbook)	Ann Alburtus
Student Council	Rob Hoopingarner

Competitive Clubs

Archery	Kate Overheul
DECA	David VanderHorst
E-Sports	James Carrow

Year Long Clubs - Extra-Curricular

Book Club	Sara Brown
	Julie Griesbach
Central Companions	Katherine Millar
Chess Club	Chris Czuk
Computer Science Club	Mark Mattox
Cooking Club	Stephanie DeAnda
CHOW (Culinary/Heritage Org. for Welfare)	Kent Baker and Carolyn Moore
Disc Golf Club	John Dunlop
Dungeons & Dragons	James Phillips
Environmental Club	John Gill
FCA - Fellowship of Christian Athletes	Mike Freeland
Fiber Arts Club	Irene Mayfield
	Kay Tarleton
Fill 24 - The Jesus Generation	Tammy Rearick
Film Club	Ann Alburtus

Year Long Clubs - Extra-Curricular

French Club	Rachel Flachs
Gamers Club	James Phillips
Garden Club	Stephanie DeAnda
	Melinda Flickinger
	Samantha DeVries
GSA - Gender and Sexualities Alliance	Tyler Baas-Peterson
Ginsburg Society	Amber French
Interact Club (Rotary)	Andy Iasci
JEDI Club	James Phillips
	Carolyn Moore
	Ashley Bowen
Kids in Science Club	Darcy Banitt
Model UN	Amber French
	Adam Schwanzl
Montage Literary & Arts Magazine	Tyler Baas-Peterson
Music Outreach Club	Silvia McClish
Outdoor Adventure Club	Jason Badders
	Casey Badders
PC USITT	Jason Frink
	Liz Honeysett
Ping Pong Club	John Gill
Project Linus	Kent Baker
Recycling Club	Cheryl Braford
Rise & Shine Optimist Club	Theresa Mills
Rock Climbing Club	Jason Badders
	Casey Badders
Sewing Studio	Kat Frink
Ski Club	Jason Badders
	Casey Badders
	Eric Lancaster
Spanish Club	Bonnie Moss
Water Polo Club	Samantha DeVries
	Greg Lowman
Youth Interested in Medical Careers Club	Darcy Banitt



Counseling Office Staff



Todd Tarnutzer

Last names: A-D, F
(269) 323-5275
ttarnutzer@portageps.org



Lisa Jepson

Last names: E, M, O-R
(269) 323-5288
ljepson@portageps.org



Shannon Schippers

Last names: G-L
(269) 323-5278
sshippers@portageps.org



Karen Kreis

Last names: N, S-Z
(269) 323-5277
kkreis@portageps.org



General Info & Appointments

Jodi Drews
(269) 323-5283
jdrews@portageps.org



Registrar/Transcripts

Nicole Gutshall
(269) 323-5282
ngutshall@portageps.org

We Have Helpful Resources

The Learning Center

This resource for students is located in the heart of the Mustang Way and is open Monday through Thursday 7:15 a.m. to 3:00 p.m. It serves as a quiet study hall with tutors. Students sign up for the Learning Center and may attend during seminar periods.

Although the room is designated for students already signed up at the beginning of the semester, the center will not turn away those who want to get extra help from one of the tutors, especially during exam time.

Tutoring Services

Portage Central offers peer tutoring after school or during seminars for all students who may need some extra help. If you feel you need help in a class or two, we can find you a student who is knowledgeable in that subject. For more information, contact Mrs. Smith in the Activities Office at nsmith@portageps.org or (269) 323-5265.

Counselor Roles

The Counseling staff works with students and families to ensure that the high school experience goes smoothly. Our staff is trained, qualified and certified to work with a student's academic, social, and emotional needs. The objective of the counseling staff is to create a high school schedule and experience that prepares the students for their post-secondary goals. Individually, we meet with students to create Educational Development Plans and schedules during high school. Additionally, counselors create and lead classroom presentations throughout the year to address student needs and goals at each grade level.

ONWARD

We Have Community Support



Mustang Alumni Association

The Mustang Alumni Association was developed in 2011, and since then it has grown into one of the largest community support organizations Portage Central has. It has over 500 alumni members and countless volunteers, including a board of alumni. The association donates several thousand dollars a year to help support programs such as club activities, the prom, and field trips. The Mustang Alumni Association board meets every other month and is always looking for alumni or friends to join!

Are you a Portage Central Alum? Join!

Join the association today and help this incredible group of committed alumni continue to make Portage Central the wonderful place it is. To learn more, visit www.portagecentralalumni.org

Parent-Teacher Organization

PTO, like all of our organizations, is a strong and united group who is dedicated to getting involved in our school for its greater benefit. Their fundraisers have supported everything from our canine drug detection program to classroom supplies for teachers.

This group commits its time and resources to ensure that your students have what they need to be successful. Over the past ten years, they have donated well over \$40,000 to student and school groups by raising money throughout the year, including organizing and putting together our student's Fall Formal.

PTO is a great way to get involved as a parent and to make sure all your students' experiences here are all that they should be. For more information, please contact the Activities Office at (269) 323-5265.

Our School

WORK

The Main Office is located just a few steps from the student entrance and across from the Welcome Center. Mr. Alburtus, Ms. Salisbury, and Mrs. Kaylor, as well as many other wonderful colleagues, all work in the Main Office.

LEARN

The Library Media Center is on the second floor just above the Main Office and is where Mrs. Brown and Mrs. Griesbach work. It is a state of the art learning resource for students. The center includes computer labs with the latest software, a lounge area with comfortable chairs, and Vinnie's Cafe coffee shop.

LEAD

The Performing Arts Center and the Activities Office, located halfway down the Mustang Way, serves the school's choir, drama, orchestra and band programs as well as our many clubs. It includes music rooms, a black box theatre, the auditorium, and practice rooms specifically designed to create the perfect sound. The Activities Office, where Mrs. Smith works, is also located in this area and is there to serve all students who work in the performing arts, music and clubs.

TEACH

The Academic Center, at three stories, is the tallest part of the school. It houses almost all of the classrooms and lockers. Each floor of the academic center is broken up into an East and West wing, which are joined on the second and third floor by a bridge. Just like all of our staff, our teachers are here because they CARE.

CARE

The Counseling Office is located just south of the Main Office near the Welcome Center. The Counseling staff is trained and certified to work with students and families on students' academics, social, and emotional needs. Mrs. Kreis, Mrs. Jepson, Mrs. Schippers, and Mr. Tarnutzer are all available anytime during the day to assist you.

COMMIT

The Attendance Office is located near the Main Office in the Academic Center. Mrs. Thrash, in the Attendance Office, will help make sure you are successful with your attendance, something that is crucial to your overall success.



Our School

EXCEL

The Mustang Athletic Center and the Athletic Office, located off the Mustang Commons, house the school's gymnasium, natatorium, locker rooms, wrestling and mat rooms, and weight and fitness areas. The gymnasium boasts a top-of-the-line sound system with three full courts for basketball and volleyball. Upstairs, the weight room is all new this year and has a large area that allows for multiple teams to work out at the same time. The locker rooms include separate areas for teams and physical-education classes, as well as spaces for coaches and game officials. The Athletic Office, where Mr. Wallace works, is located in this area, and he is there to serve all students and staff involved in our athletic programs.



WE ARE DIVERSE

The Welcome Center, where you will find Mrs. Sims, is the hub of all activity for Portage Central. The center serves as a one-stop shop for students to purchase lunch and parking passes, dance tickets, and other fundraisers, etc. that are going on. And, it's the place to go on Wednesday's for popcorn (only 50 cents)!



WE ARE ONE COMMUNITY

The Mustang Commons is the multi-purpose area located between the gymnasium and the auditorium. It serves as both the daily cafeteria, as well as a common space for spectators during athletic events and intermissions during musicals. This truly is where everything we do comes together in one place.



WE ARE MUSTANGS

The Mustang Way is the main hallway that connects the Academic Center, the Performing Arts Center, the Mustang Commons, and the Mustang Athletic Center. Along the walls, you'll see every conference championship team photo as well as the class graduation photos back to 1926 in the Alumni Center.



Important Things to Know

Service Hours

All Freshmen have a responsibility of 5 service hours per semester for their 9th Grade History Classes. Students should make sure to talk to their History teacher the first week of school so they understand the requirements. Try and get these hours taken care of as soon as possible so you're not struggling at the end of the school year to complete this requirement.

If you are looking for other volunteer opportunities and/or are interested in the PCHS Community Service Award, please visit the GLIC to download more information.

You can also look for information on the Community Bulletin Board, located on the 2nd-floor balcony. Check with Mrs. Smith and/or Mrs. Imus in the Activities Office, or go online and look for Volunteerism in Kalamazoo, MI.

Service hours for the community service awards must be completed in person with a non-profit organization.

Submit completed service forms to Mr. Brown in room 1133 no later than four weeks from the date of the service hours. Ongoing activity hours must be submitted every four weeks to be counted. Any summer hours must be submitted to Mr. Brown within two weeks after the start of the new school year.

First Time Skyward User

As a new parent to Portage Central High School, one of the most important things you can do for your child is to help them stay on top of their academics. With access to Skyward, you can check their grades regularly. Here is the information to get signed up:

1. Make sure your email is on file and up to date with your school. This should have been included with your enrollment information.
2. To access the log, navigate to <https://skyward.portageps.org>
3. Click on the "Forgot Password" link, which is just underneath the 'Sign In' button.
4. Enter the email you have on file with your school and click "submit".
5. You will receive a link in your email inbox with a Login ID and instructions to reset your password.

Note: If you do not receive a password reset email within 10 minutes, please check your spam folder inside your email client. From time to time, spam filters trap Skyward emails. If the email is not in your spam folder, it is likely we don't have your correct email address on file. Please contact your building office to verify/correct if needed. If that does not work, please contact help@portageps.org.



BELL SCHEDULE

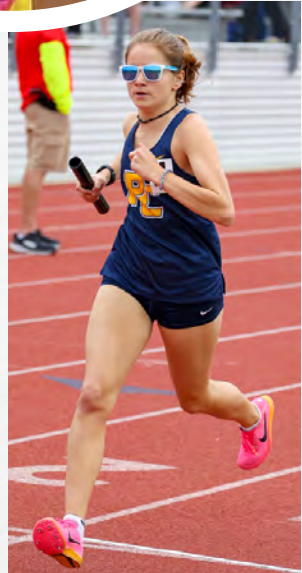
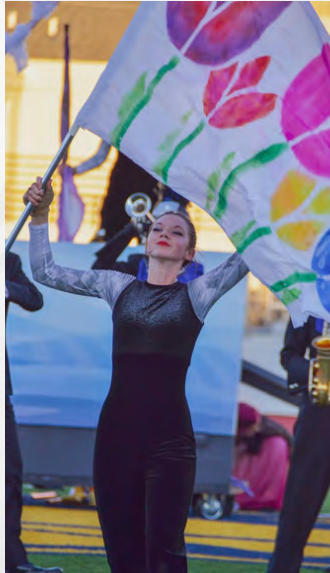
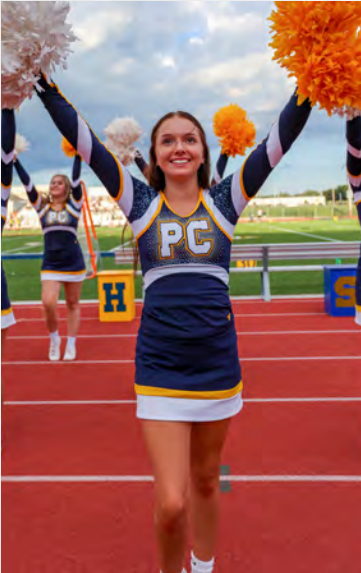
First Hour	7:40 - 8:30
Second Hour	8:35 - 9:25
Third Hour	9:30 - 10:20
Fourth Hour	10:25-11:17
Fifth Hour	11:22-12:47
A-Lunch	11:22-11:52
A-Class	11:57-12:47
B-Lunch	12:17-12:47
B-Class	11:22-12:12
Sixth Hour	12:52-1:43
Seventh Hour	1:48-2:40





Encourage your child to get involved

It is the best way for them to make friends and to feel connected to our community.



CREATE YOUR OWN SUCCESS

BE PRESENT.

Attend class and be on time.

WORK HARD.

Do your homework - ask questions - study. Get help when you need it.

SHOW RESPECT.

Be considerate of those around you and of the learning environment.

BE SAFE.

Keep yourself and your friends safe and drug free. Talk with trusted adults when you or your friends have problems.

THINK.

Be thoughtful about your education.

FOLLOW THE RULES.

Read and use the student code of conduct.

GET INVOLVED.

Become part of the school community through extra-curricular teams and clubs. Participate in service activities and school events.

NEVER GIVE UP.

Set goals and move toward them step by step. Help others toward their goal.